



“Training and Employment in the Rural Sector: Integration proposal in dual work economies and markets undergoing changing processes”

42° Technical Commission Meeting
OIT/Cinterfor
Buenos Aires, 2015

Context of the Rural sector in Chile

National context

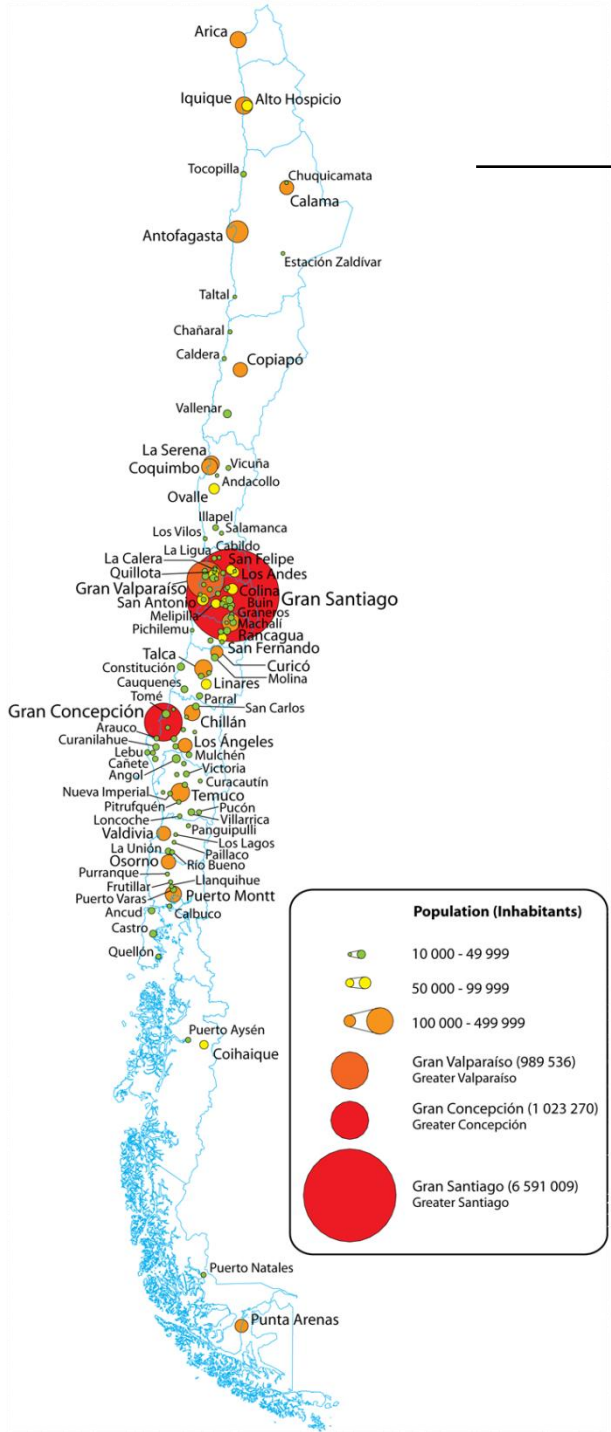
Surface

Total 75.609.600 Hectares.
Productive 5.100.000 Hectares.

Demography

Total population 17.094.275
Rural population 2.226.103
Male 8.461.327
Female 8.632.948

Institution	% Rural	Criteria
INE	13,1%	More tan 2000 people per populated area
World Bank	35%	Less tan 150 people /km2 and more tan 1 hr from urban center (one hundred people)
OCDE	32%	Less tan 150 people/km2 (province)



Current context of the Rural sector in Chile

- ❑ High heterogeneity in rural areas with diverse characteristics and challenges.
- ❑ General agreement in the need to move further towards a description of the rural sector with higher levels of accuracy.

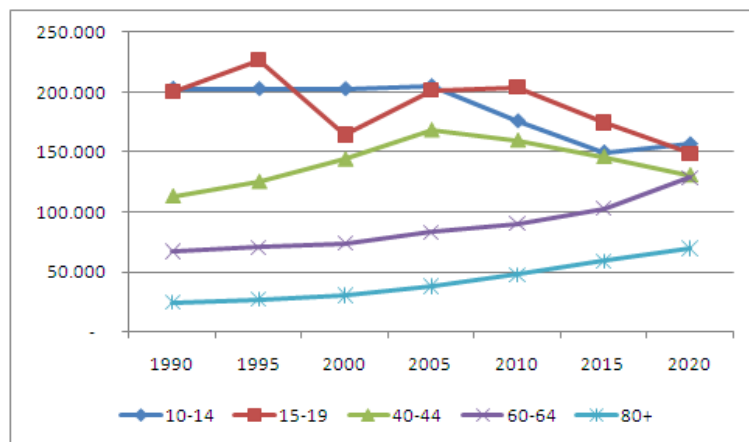
% of rural population (based 90% of the country population)	communities
44%	With intermediate levels of rurality Diverse economical activities
21%	Economy Highly dependant on agriculture Very rural in demographic terms
35%	Separated into seven groups which cross the two previous groups

Rimisp- Centro Latinoamericano para el desarrollo rural

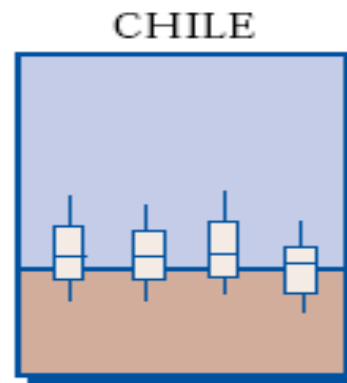
- ❑ Structural changes and update of rural and urban areas as a result of economical development of the country and globalization process.
- ❑ Global competitiveness demands the development of new competencies.

Current state of Chilean Education in Rural Context

- ❑ Increasing decline of rural population.
- ❑ Heterogeneous and irrelevant training offers.
- ❑ Increasing expectations and interests of students to continue higher education.
- ❑ Entry barriers diminished , which complicates the students training paths.
- ❑ Learning in inverse relationship to rurality and vulnerability.
- ❑ Deficient facilities, equipment and technology.



CASEN 2011.



Laboratorio Latinoamericano de Evaluación de la Calidad de la Educación 2011.

National Agricultural Society Educational Coorporation



SNA EDUCA

National Agricultural Society



Gathers all the union organizations from different areas of food production.

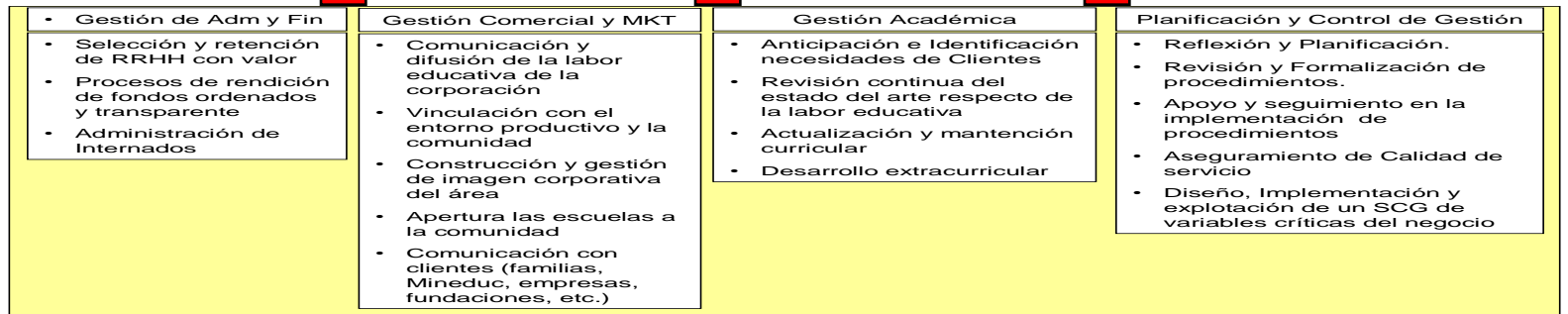
Affiliates of the National Agricultural Society



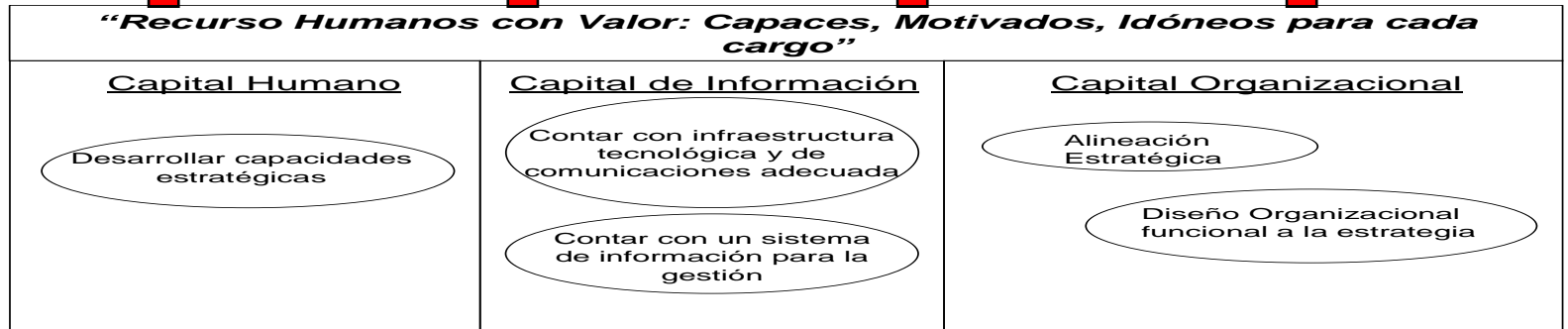
“El centro de la Labor Educativa de SNA Educa es entregar a sus alumnos las mejores herramientas para su desarrollo como personas en el mundo actual”



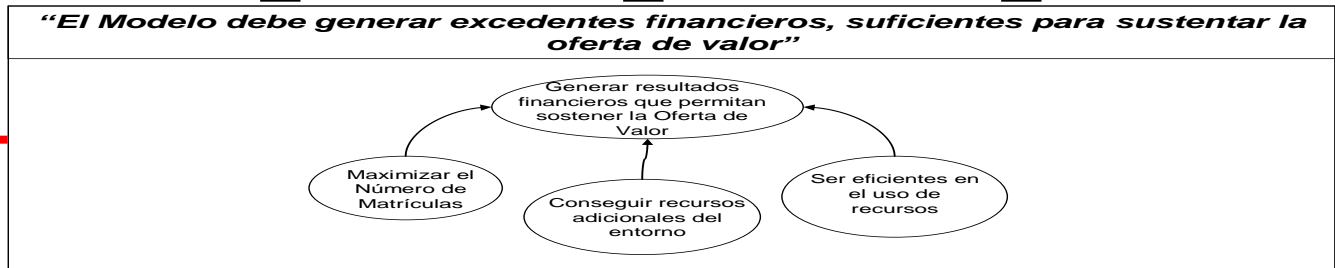
Perspectiva Clientes



Perspectiva Procesos Internos



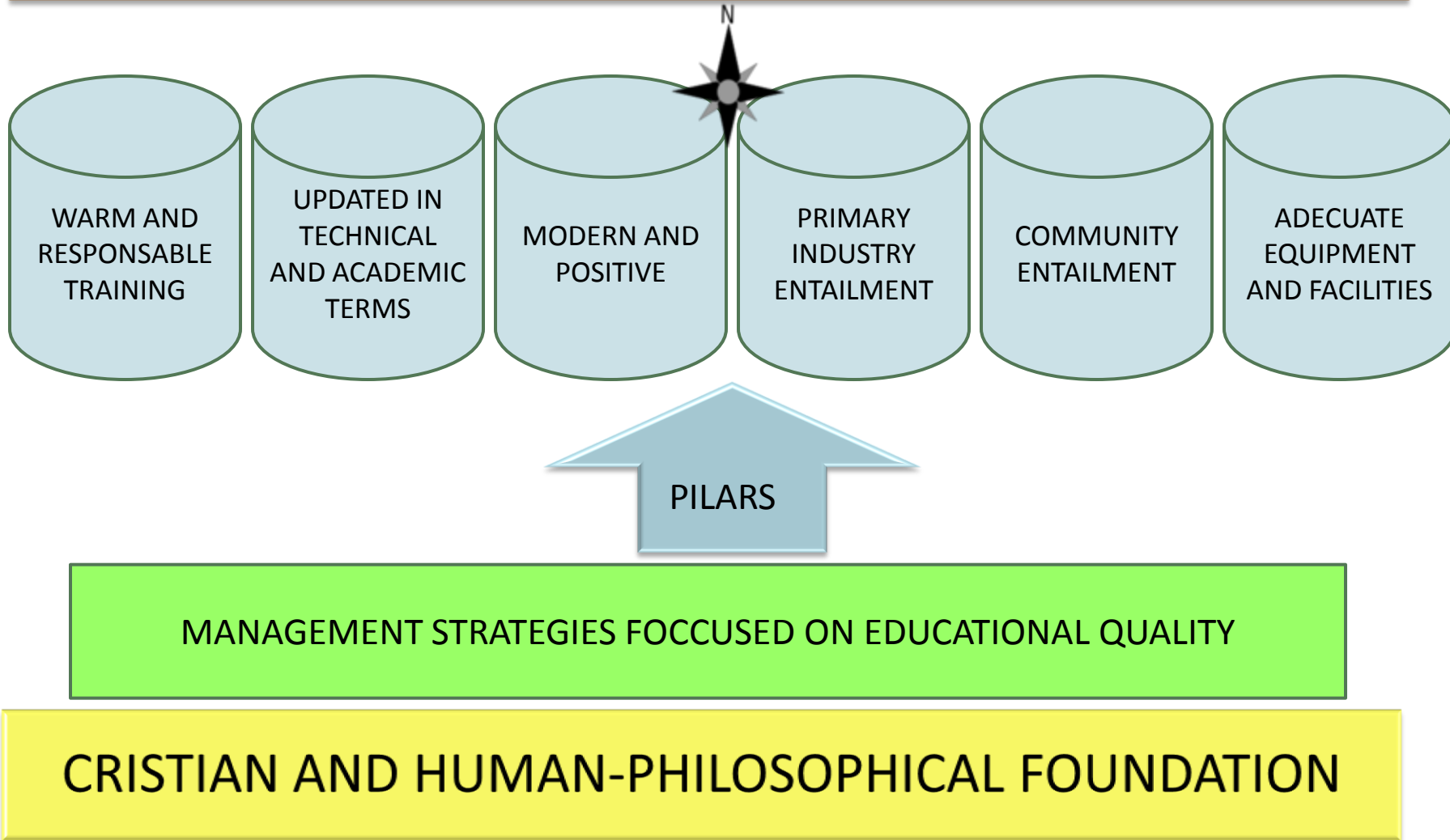
Perspectiva Aprendizaje y Crecimiento



Perspectiva Financiera

Educational project of SNA Educa

“Give our students the best tools for their personal development in the current world”



SNA EDUCA

Years of history: 38 years

Educational facilities : 20
(from I to XI Region in Chile)

N° Students :10.000 (50%
Residents)

**Educational Vulnerability
Index (IVE) :** 80,3 %

**Employment Rate of
graduates:** 93,5%

**Employees level of
satisfaction:** 86,7 %

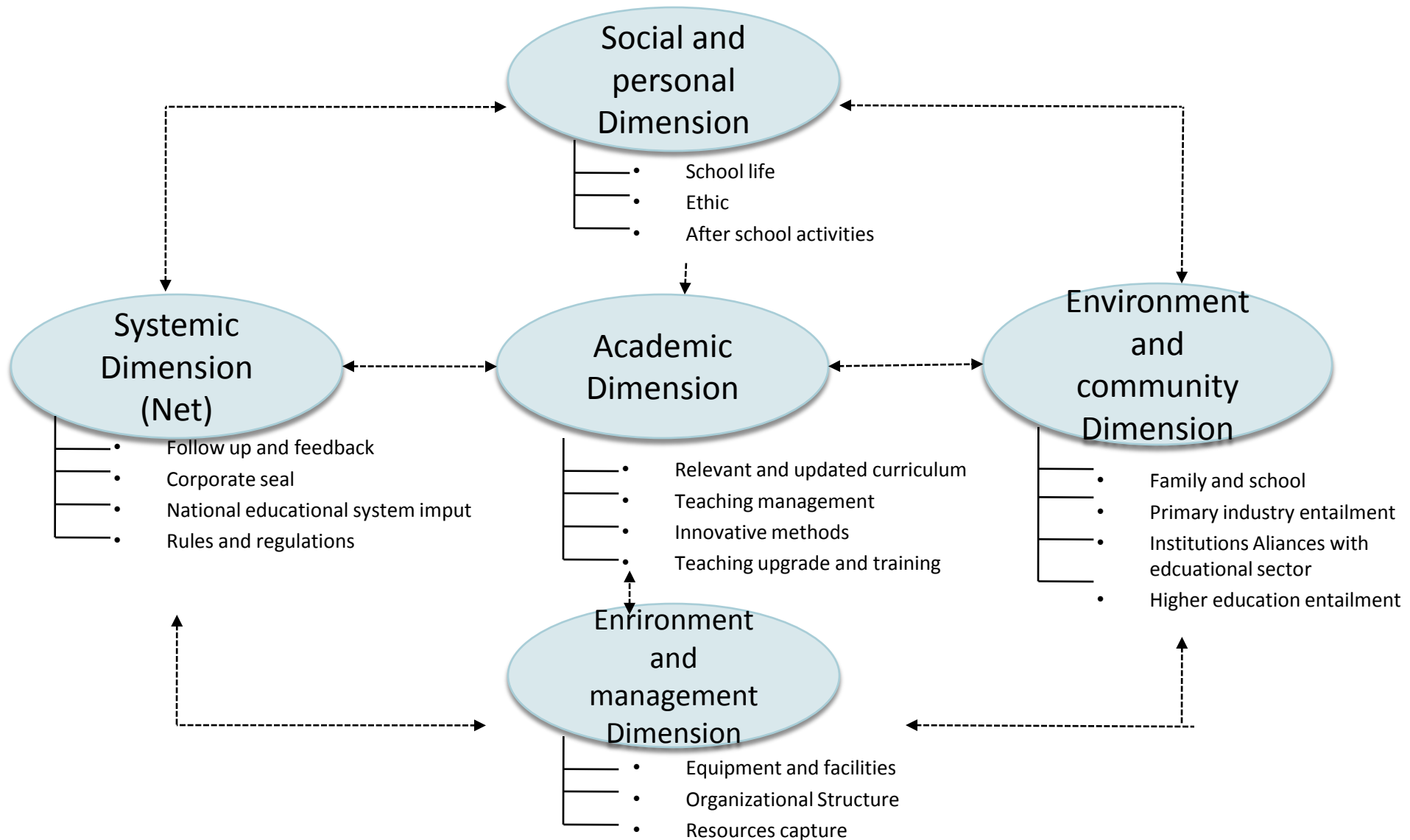
Business Councils :
110 Business



13 Productive sector
areas of training:

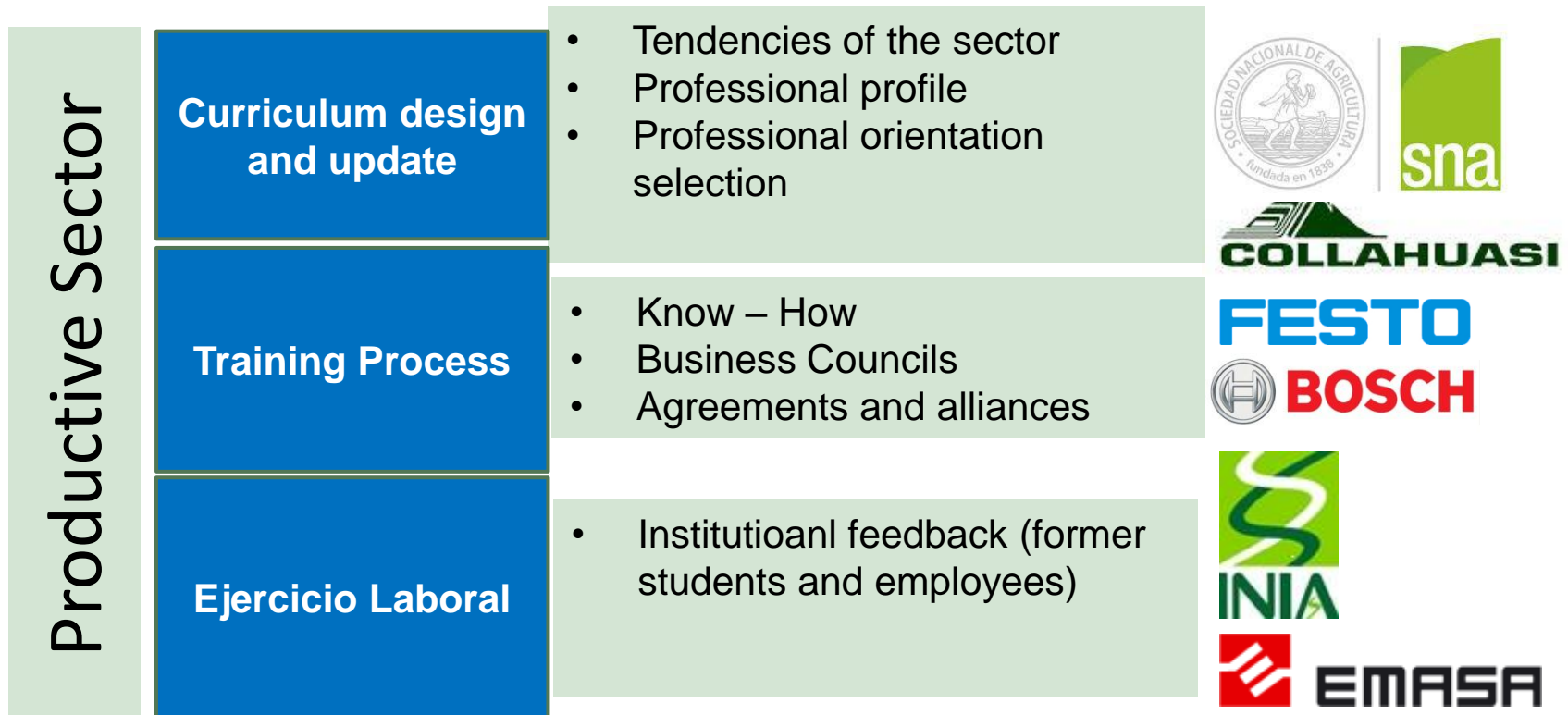
1. Agriculture
2. Forestry
3. Electricity
4. Building
5. Mecanics
6. Industrial Mecanics
7. Plumbery
8. Metalic construction
9. Electronics
10. Food services
11. Industrial food
manufacturing
12. Wood products
13. Mining

How do we do it?



Industry Entailement

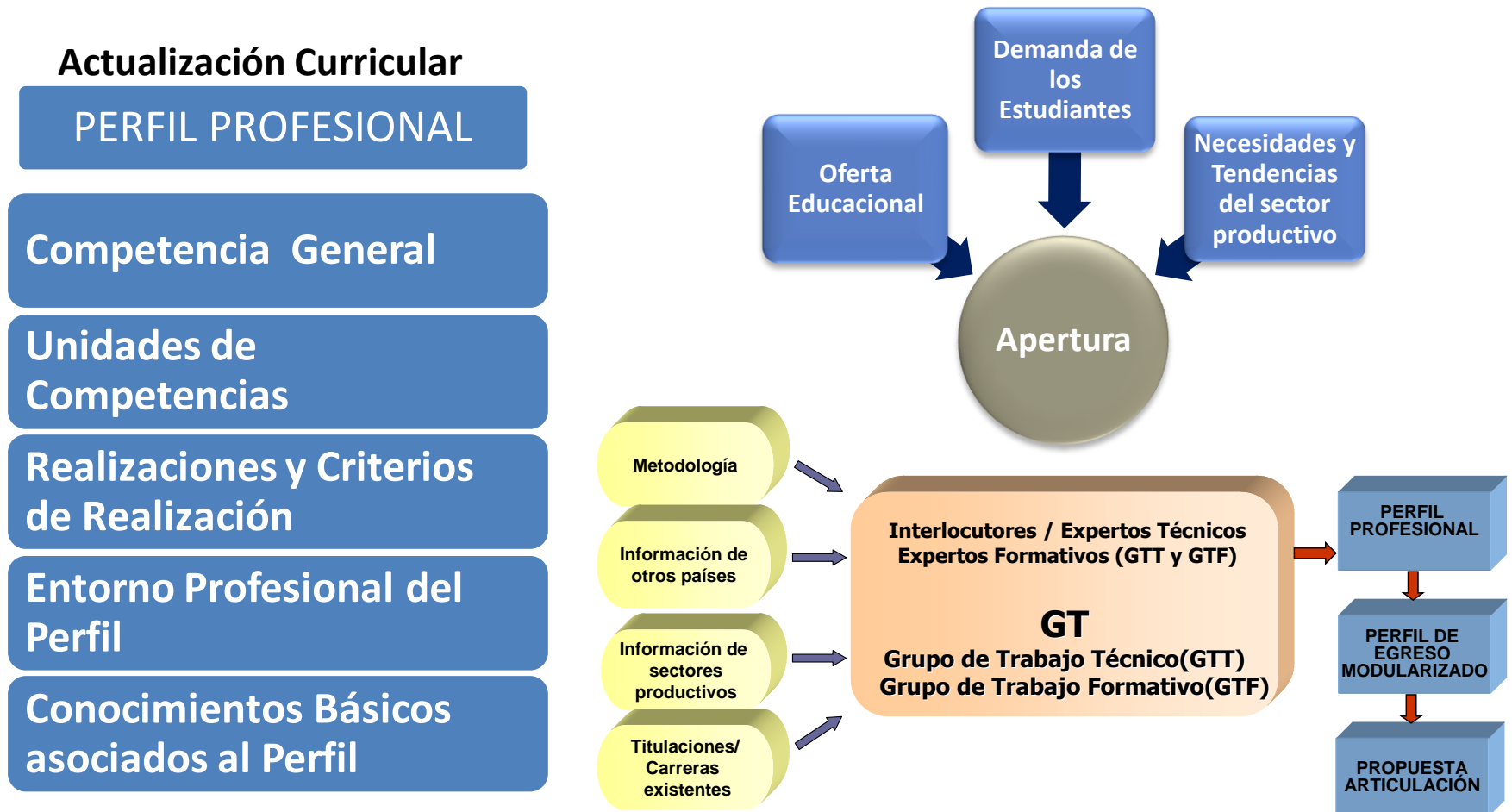
More than 400 Councils have helped in the educational facilities managements during the last 38 years



Curriculum Based on Competencies Profile

Offer **relevant** training to our students and attend the current **requirements** of the country

Apertura de Especialidades



Training on ethical values and strengthening of entrepreneurship, technical and basic habilities

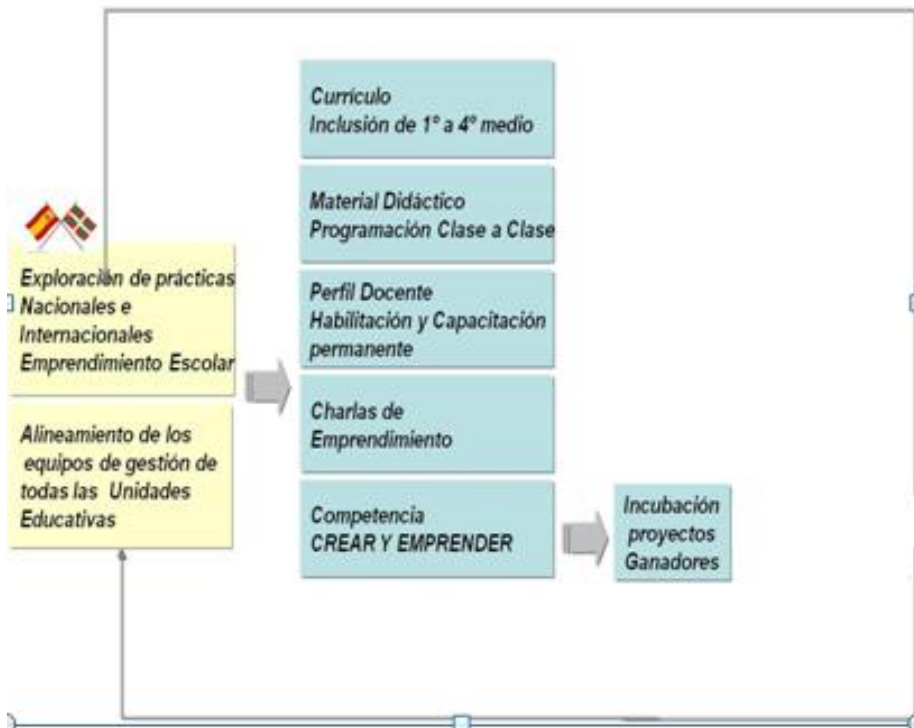
Rosetta Stone



Certified Partner



Modelo de Formación en Emprendimiento



International Entailment



SERVICIO NACIONAL DE APRENDIZAJE
Colombia



Principales Países Destinos:

- | | |
|---------------|-----------|
| Francia | Brasil |
| Nueva Zelanda | Israel |
| Colombia | Argentina |
| EEUU | China |
| Australia | Corea |

Years	Students	Teachers and Directors	Total
2005	2	3	5
2006	2	5	7
2007	15	6	21
2008	30	13	43
2009	26	14	40
2010	36	9	45
2011	27	8	35
2012	45	52	97
2013	52	39	91
2014	78	62	140
	313	211	524



Higher Education Entailment

Beneficios y Articulación Directa



SNA Educa	Año 2006	Año 2010
Graduates Students	1531	1691
Highschool Yr 1 and 2	371	589
Enrollment technical education	282	456
Related training	188	313



- **24% Graduates year 2006** enroll in high school education, 67% into technical vocational education and related.
- **35% graduates year 2010** enroll in high school education, 69% into technical vocational education and related.

Educational Facilities as Speciality Centers

- ❑ Viticulture Specialty Center (VII Región – Molina)
- ❑ Irrigation Specialty Center (VI Región - San Fernando)
- ❑ Milk Production Specialty Center (X Región - Río Negro)
- ❑ Equine Specialty Center (VII Región – Duao)

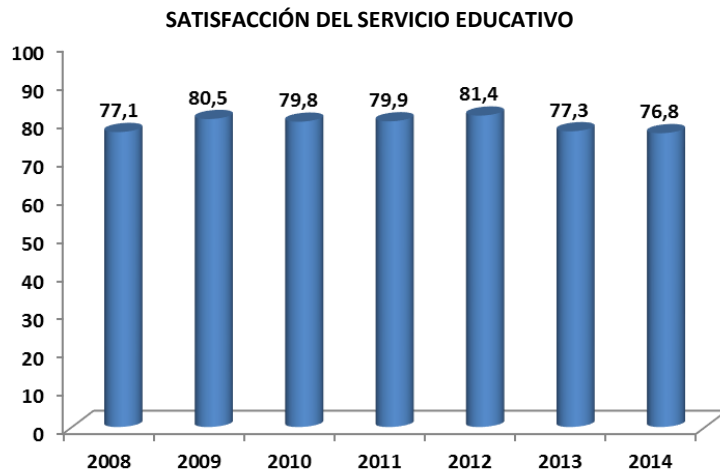
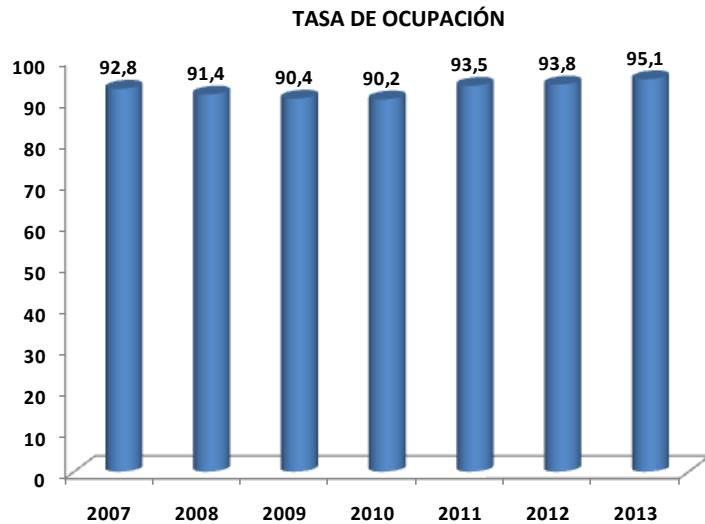


Educational and Production Project on NCRE

	N° Facilities	Amount
Solar Panel Systems	3	220 mt ² Panels
Photovoltaic Systems	5	52 Panels
Thermo-Solar Lab Model	2	4
Photovoltaic Lab Model	5	7
Biodigestors	3	
Photovoltaic irrigation Modules	1	4



Management based on feed-back on objective data



MEASURING ENTRY DATA FOR LEARNING DESIGN IN THE CLASSROOM

EVALUATION OF EXTERNAL AND INTERNAL PROCESS

CORPORATE TESTS IN PRACTICAL COMPETENCIES

GRADUATES FOLLOW UP

EMPLOYEE SATISFACTION

EDUCATIONAL SERVICE SATISFACTION

www.snaeduca.cl

